

Rev	Change	Date	By	Check	App.
A	FIRST ISSUE	2025-08-22	SEMPOE	SEVSIU	SEADPR
B	ADDED SEC. STEEL REFERENCES	2025-09-15	SEMPOE	SEVSIU	SEADPR
C	ADJUSTED ROUTING CATHODE	2025-12-18	SEJOJA	SEVSIU	SEADPR
D	GENERAL CHANGES	2026-01-27	SEMPOE	SEFRAD	SEADPR

BILL OF MATERIALS

PIPE					
ID	QTY	DESCRIPTION	DN	PRESSURE CLASS	MATERIAL CODE
1	0.5M	PIPE ACC. TO SSG 7875 - SS-EN 10217-7 - 33,7X2 - TC 1	25	40	1.4404
2	13M	PIPE ACC. TO SSG 7875 - SS-EN 10217-7 - 60,3X2 - TC 1	50	40	1.4404

FITTINGS					
ID	QTY	DESCRIPTION	DN	PRESSURE CLASS	MATERIAL CODE
3	1	CLAW COUPLING, MALE THREAD	25		1.4404
4	1	ELBOW 45° - TYPE 3D ACC. TO SSG 7875 - SS-EN 10253-4 TYPE B - 33,7X2	25	40	1.4404
5	2	ELBOW 45° - TYPE 3D ACC. TO SSG 7875 - SS-EN 10253-4 TYPE B - 60,3X2	50	40	1.4404
6	4	ELBOW 90° - TYPE 3D ACC. TO SSG 7875 - SS-EN 10253-4 TYPE B - 60,3X2	50	40	1.4404
7	1	REDUCER CONC. ACC. TO SSG 7875 - SS-EN 10253-4 TYPE B - 60,3X2 - 33,7X2	50X25	40	1.4404
8	1	EQUAL TEE ACC. TO SSG 7875 - SS-EN 10253-4 TYPE B - 60,3X2 - 60,3X2	50	10	1.4404

VALVES						
ID	QTY	DESCRIPTION	DN	PRESSURE CLASS	MATERIAL CODE	TAG
9	1	BALL VALVE ISO BW/THREAD DN25	25	63	1.4408	V-9010.122

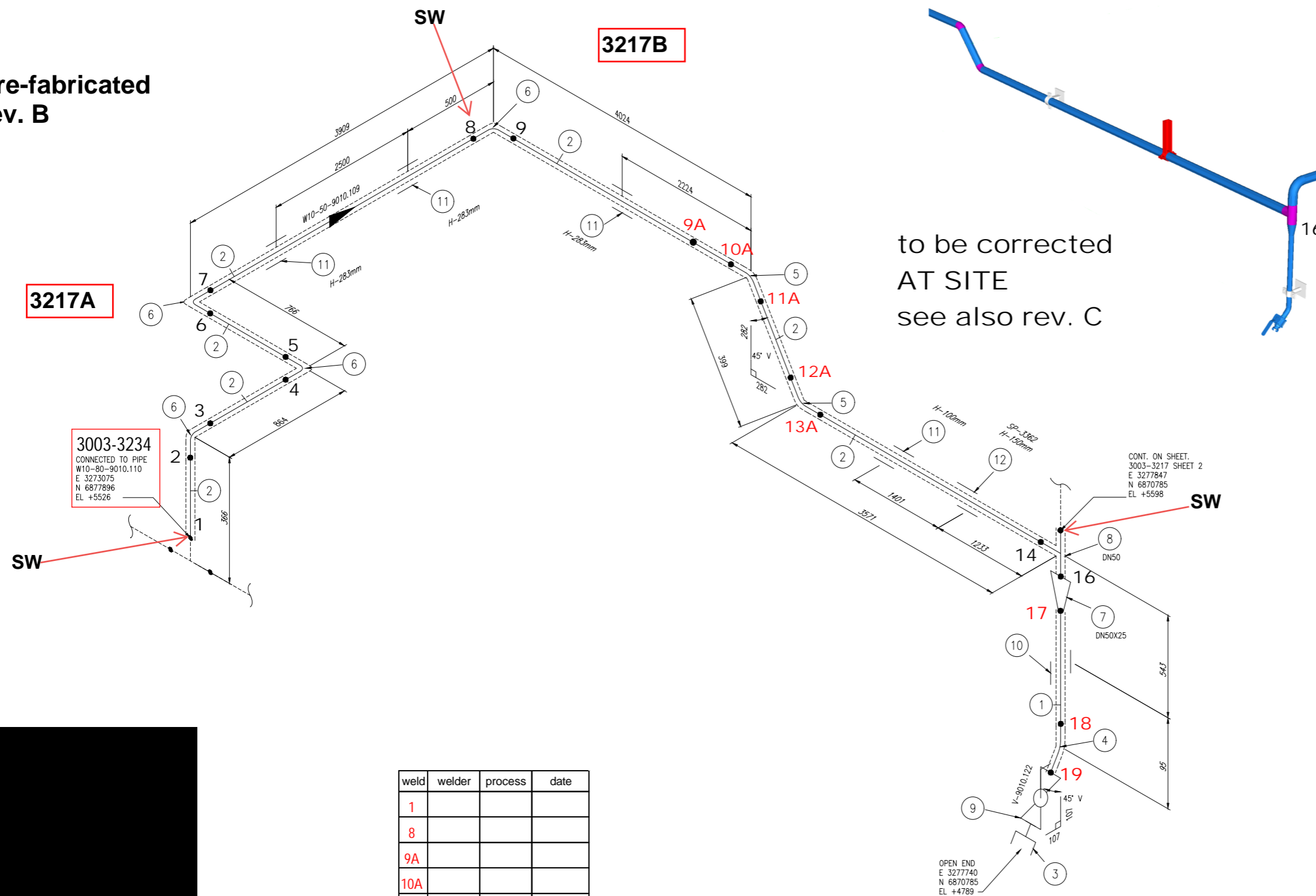
PIPE SUPPORTS					
ID	QTY	DESCRIPTION	DN	PRESSURE CLASS	MATERIAL CODE
10	1	SUPPORT - TYPE 31A - DK35 - H 100	25		1.4404
11	4	SUPPORT - TYPE 31A - DK61	50		1.4404
12	1	SUPPORT - TYPE 31B - DK61	50		1.4404

Heat number	
1	
2	
3	
4	
5	
6	
7	
8	
9	
10	

- NOTES:
- The extent of pre-fabrication is determined by and in the responsibility of the piping contractor. Engineering documents does not take into account any pre-fabrication.
  - The number of field welds and location of field welds are to be determined by the piping contractor.
  - All dimensions are theoretical and must be checked on site by the piping contractor before prefabrication.
  - All dimensions, heights, and coordinates are in mm within the plant's coordinate system unless otherwise specified.
  - All dimensions for valves, instruments, and equipment are to be considered as preliminary and must be verified with the purchaser by the piping contractor before start of any pre-fabrication or installation of piping.
  - Specified theoretical locations of equipment, connections, steel structures, etc. must be verified on site by piping contractor.
  - The pipe contractor is responsible for cleaning, flushing and pressure testing of all pipes in their scope of supply before handover to purchaser.
  - The piping contractor is responsible for pipe marking of the piping in their scope of supply acc. to pipe marking list and pipe marking instructions before handover to purchaser.
  - For all plastic piping, a rubber insert made of 3 mm EPDM is to be supplied and installed by the piping contractor between pipe clamps and pipe outer surface.
  - Bolt connections (bolt ISO 4014, nut ISO 4032, washer ISO 7089) for pipe support clamps must be made of material A4-80 according to EN 3506-1.



Pre-fabricated  
rev. B



3217A

3217B

3003-3234  
CONNECTED TO PIPE  
W10-80-9010.110  
E 3273075  
N 6877896  
EL +5526

CONT. ON SHEET.  
3003-3217 SHEET 2  
E 3277847  
N 6870785  
EL +5598

weld	welder	process	date
1			
8			
9A			
10A			
11A			
12A			
13A			
17			
18			
19			

Asentaja / Fitter

Tarkastettu / Checked

NOTES SECONDARY SUPPORTS:

- PRIMARY SUPPORTS WITH NO REFERENCE TO A SECONDARY SUPPORT TAG NUMBER SHALL BE PLACED ON EXISTING STEEL.
- PRIMARY SUPPORTS WITH REFERENCE TO A SECONDARY SUPPORT TAG NUMBER SHALL BE INSTALLED ON THAT SPECIFIC SECONDARY SUPPORT. ALL SECONDARY SUPPORTS ARE LISTED IN THE SECONDARY SUPPORT LIST.

FLUID AND CLASS		MATERIAL		MANUFACTURING & INSTALLATION		INSPECTION & TESTING		RELATED DOCUMENTS	
Line number	W10-50-9010.109	Nominal spec		Standard	EN13480-4	Standard	EN 13480 - 5	P&ID	F924359-EUR-0002
Media	W10	Material group	8.1	Welding	Acc. to approved WPS/WPQR	Pressure test bar(g)	14.3	Drawing list	F958983-SWE-0001
Fluid phase	Liquid	Corrosion allowance	0	Isolation thickness	20	Pressure test fluid	WATER	Pipeline list	F958983-SWE-0057
Fluid group AFS 2023:5	2			Isolation material	Rockwool	NDT - VT%	100%VT	Valve list	F958983-SWE-0055
Category AFS 2023:5	Category 0 (86)			Tracing		NDT - RT/UT%	min. 2%	Instrument list	1000005-BOL-0002
Module AFS 2023:5				Surface treatment	Pickling/Passivation	NDT - MT/PT%		Armature list	F958983-SWE-0056
Fluid group AFS 2023:11	2a			Painting				Sec. support list	F958983-SWE-0054
Class AFS 2023:11	No Class			Heat treatment	Acc. to approved WPS/WPQR			Pipe marking list	F958983-SWE-0058

This drawing and enclosures are to remain our property. Neither in original nor in revised form, nor by any means, electronic or mechanical, including photocopying, recording, or by any information storage and retrieval system, may be reproduced, stored in a retrieval system, or transmitted in any form or by any means, without our explicit and prior consent. Violation of this regulation will be prosecuted.